

WERRIBEE OPEN RANGE ZOO

Sensory Friendly Map

Map Key

- Toilet
- Baby change
- Accessible toilet
- Changing Places toilet
- Food & drink
- BBQ area
- Picnic area
- Information
- Village Trader (limited capacity)
- Drinking water
- Play zones
- First aid
Alert a staff member if you require first aid.

African River Trail
1000 metres / 60 minutes
Stroll through our own African Village. Spot cheetahs, lions, hippos, monkeys, gorillas and more.

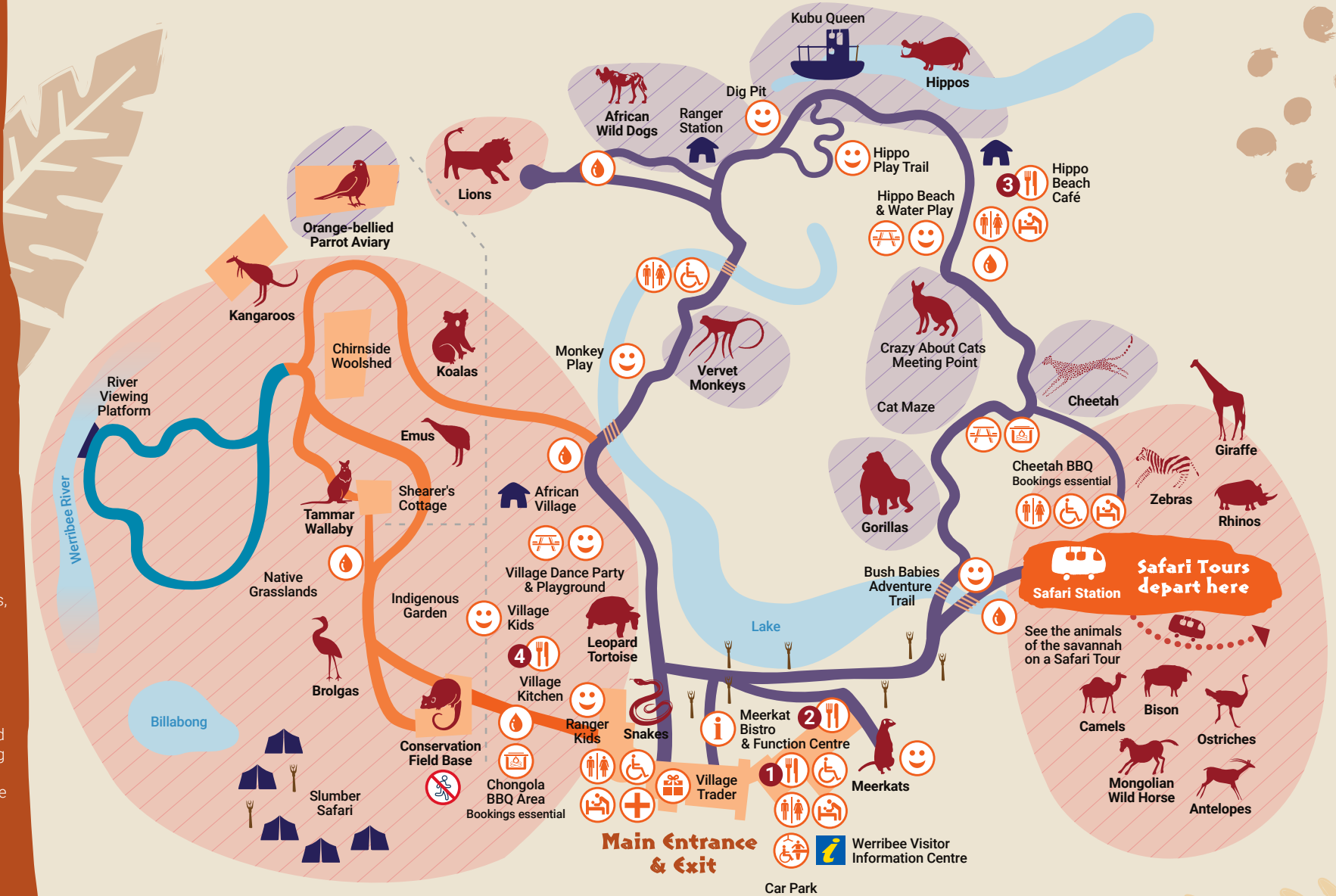
Australian Trail
500 metres / 20 minutes
See Australian wildlife in their native grassland habitat, spot koalas and the critically endangered Orange-bellied Parrot while meeting some curious creatures in Conservation Field Base, and explore the historic Chirside Woolshed.

Werribee River Trail
1000 metres / 35 minutes (Closes at 4.30pm)
Recharge as you wander down to the picturesque Werribee River on this tranquil nature walk.

Some areas closed for maintenance.

High sensory areas
Busy areas with a mix of multimedia, loud noises, low light, indoor exhibits, free ranging animals and/or strong smells.

Low sensory areas
Quiet, light areas with fewer people.



Kids activities

Junior Safari

An energetic 35-minute safari bus tour, featuring music and lots of animal action. Available on weekdays only. Check with staff for departure times.

Ranger Kids

An indoor play space where kids can play at being vets and rangers. Home for our snakes, lizards and tortoises. Open 10am – 4.30pm daily.

Free with admission (limited capacity).

Where to eat

1 Meerkat Bistro

Open from 9am for breakfast and lunch (licensed venue). Seasonal menu plus house-made bakery items, hot and cold beverages and ice creams.

2 Tribal Beats Kiosk

Rotisserie chicken or pulled pork wraps. House-made bakery items, hot and cold beverages, fresh sandwiches, salads, chips and snacks. Kids packs available.

3 Hippo Beach Café

House-made Zoo pies and bakery items, hot and cold beverages, fresh sandwiches, salads and ice cream.

4 Village Kitchen

Pizza, sandwiches, hot and cold beverages within view of the Village Kids playground.

Safari Tour

See rhinos, giraffe, zebras and more roaming across our stunning open savannah on a 40-minute Safari Tour. Running regularly throughout the day, the last tour boards at 3.30pm.

Fitted face masks must be worn on the bus.

No food or drinks on the bus. Water bottles excepted.

Zoo safety

In the interests of visitor and animal safety, please keep to the pathways, stay behind the safety barriers and do not feed the animals or free-roaming birds.

Animals may be off display for short periods due to animal husbandry or exhibit maintenance reasons.

Information provided and times specified may be subject to change.

Vegetarian options

Gluten Free options



The Zoo is smoke-free.

Pass-outs are available from gate staff.

We acknowledge the Traditional Custodians of the land on which we live and work, and pay our respects to Elders both past and present.